

Notices



89/336/EEC - The EMC Directive

- CISPR 22:2003 +A1:2004 / EN 55022:2003
- CISPR 24::1997 / EN 55024:1998 +A1:2001 & +A2:2003



FCC Part 15, Subpart B

- Class B Computing Devices for Home & Office Use

NOTE: This equipment has been tested and found to comply with the limits for a Class B digital device, pursuant to Part 15 of the FCC Rules. These limits are designed to provide reasonable protection against harmful interference in a residential installation. This equipment generates, uses and can radiate radio frequency energy and, if not installed and used in accordance with the instructions, may cause harmful interference to radio communications. However, there is no guarantee that interference will not occur in a particular installation. If this equipment does cause harmful interference to radio or television reception, which can be determined by turning the equipment off and on, the user is encouraged to try to correct the interference by one or more of the following measures:

- Reorient or relocate the receiving antenna.
- Increase the separation between the equipment and receiver.
- Connect the equipment into an outlet on a circuit different from that to which the receiver is connected.
- Consult the dealer or an experienced radio/TV technician for help



Electric~Spin Inc. has employed recycled materials, recycling and has taken steps throughout the manufacture of Golf Launchpad to reduce its impact on the environment. Efforts have been made to minimize the impact on the environment due to un-recycled waste, volatile organic solvents and other harmful manufacturing practices. Please recycle the packaging materials.

NOTICE CONCERNING TRADEMARKS AND PATENTS

Electric~Spin, the Electric~Spin logo, Golf Launchpad, Golf Launchpad Tour, Golf Launchpad Flite, the Golf Launchpad logo, the silhouetted golfers and "launch your game" are trademarks of Electric~Spin Corporation. All other trademarks are the properties of their respective owners. Covered by one or more of the following patents: U.S. Patent No. D555,221 S. Other Patents Pending. Copyright © Electric~Spin Corporation. All rights reserved.

DECLARATION OF CONFORMITY

MANUFACTURER:	Electric-Spin Corp.
ADDRESS:	171B Marycroft Ave. Suite 202 Woodbridge, Ontario Canada, L4L 5Y3
Product Name:	Golf Launchpad Tour / Flite
Equipment Type:	Information Technology Equipment
Model No.:	LPTVPX / LPFVPX
Year of Manufacture:	2009

1. Safety

Due to the extreme forces generated while playing golf, the following safety information should be strictly followed. Failure to do so could result in serious injury or property damage.

Swing room: please ensure that you have safe swing room with no interfering objects in the swing path. If swing space is limited, please substitute a shorter club for a longer one: (e.g. swing a 7-iron instead of a driver). In the game software, always choose the best club for the shot.



Inspect Golf Launchpad: before play, verify that Golf Launchpad's components are secure and not damaged in any way. If the ball, the tee or any other component is worn or damaged, it must be replaced immediately.



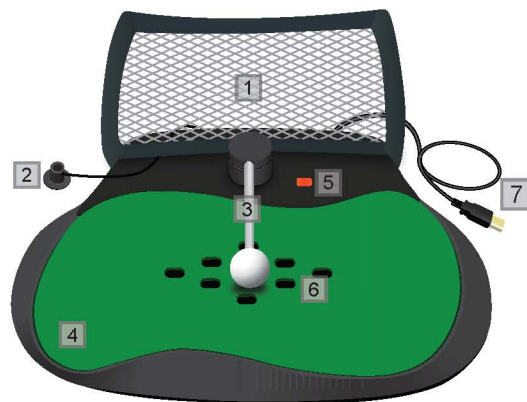
STOP PLAYING IMMEDIATELY IF THE BALL, THE TEE, OR ANY OTHER COMPONENT IS DAMAGED OR WORN OUT. Convenient replacement parts are available from www.electricspin.com—get your Reload Kit to avoid game interruption!

2. Golf simulator's parts

Contents:



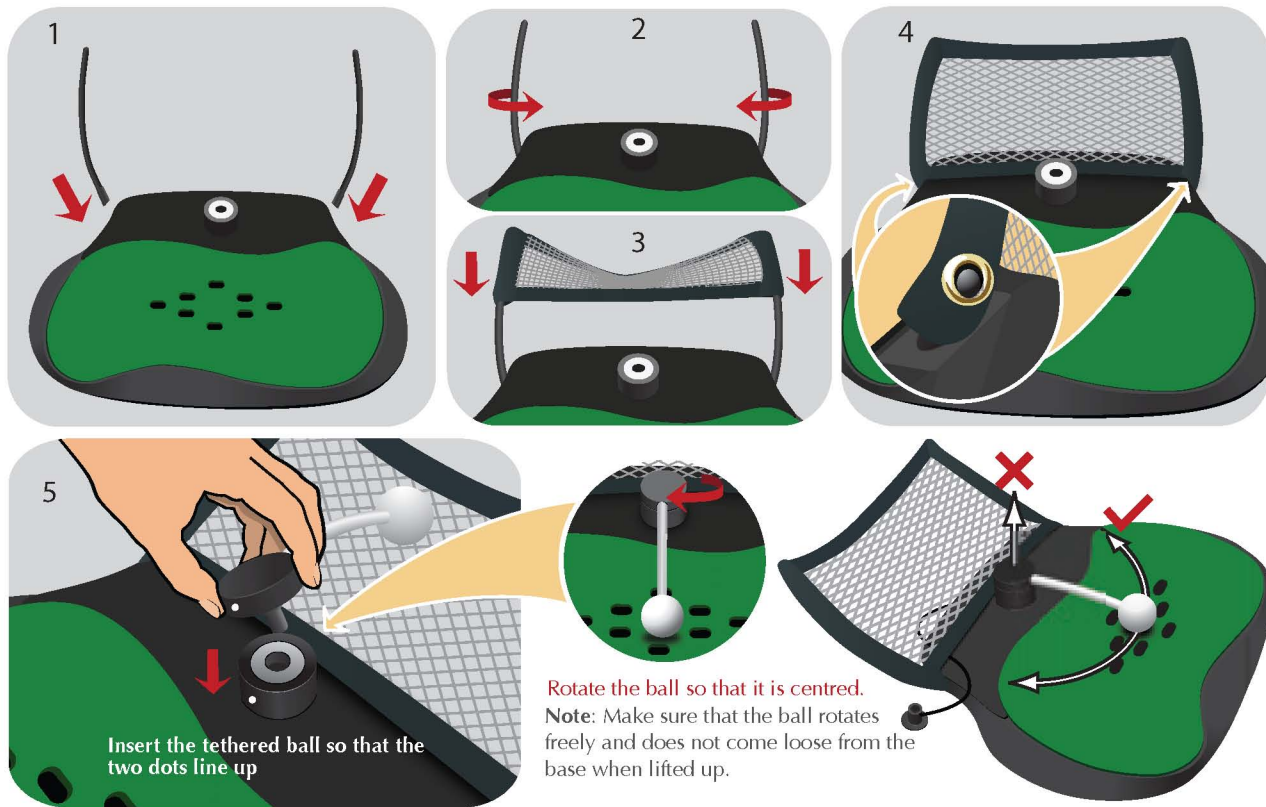
After assembly:



- 1** Micro Capture Net*
- 2** Tee*
- 3** Tethered Ball*
- 4** Replaceable Turf*
- 5** Status Indicator
- 6** Sensor Grid
- 7** USB Cable

*Replaceable components.

3. Assembly



4. Plug and play



4.1 Plug

Connect Golf Launchpad to a free USB port on your computer or Playstation3.

4.2 Prepare to tee off (PC/MAC)

1. Install Tiger Woods PGA TOUR and learn to navigate the game with your mouse and the Remote Caddy™.

2. In the settings menu choose the **True Swing Vertical** mode.



3. Select your club and choose your shot type and direction, then place the cursor near the player's hands until it looks like a curved arrow. Do not click.



4.3 Prepare to tee off (Playstation3)

1. Press the  button and ensure that Golf Launchpad is assigned to controller #1.
2. Use the Remote Caddy™ to start a new game and prepare to tee off.



Remote Caddy™

4.4 LPDR (Drive Range Swing Analyzer software)

1. Download the latest LPDR from <http://www.electricspin.com/software.html>, or install from the supplied CD.
2. Select your club with the Remote Caddy™ or mouse. Use only the Drive mode for activation.



LPDR



4.5 Activate Golf Launchpad with Remote Caddy™

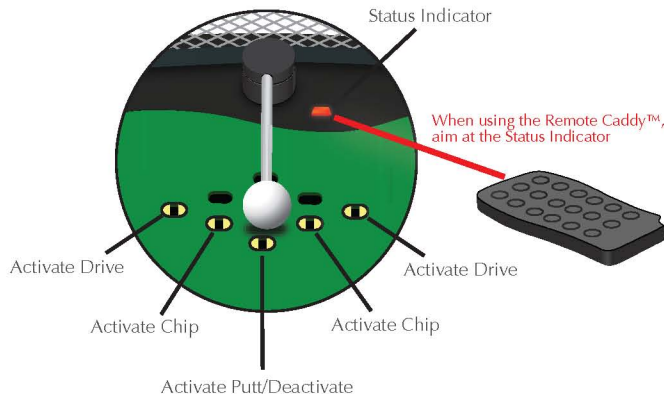


5. Playing a round



Golf Launchpad must be activated before playing a shot. This may be done either with the Remote Caddy™ or by covering one of the activation sensors with your club.

The activation sensors are shown as 



5.1 Status Indicator



A steady red means that Golf Launchpad is waiting to be activated. To activate, briefly **hold** your club over one of the activation sensors.



Continue holding your club until the status indicator turns green.



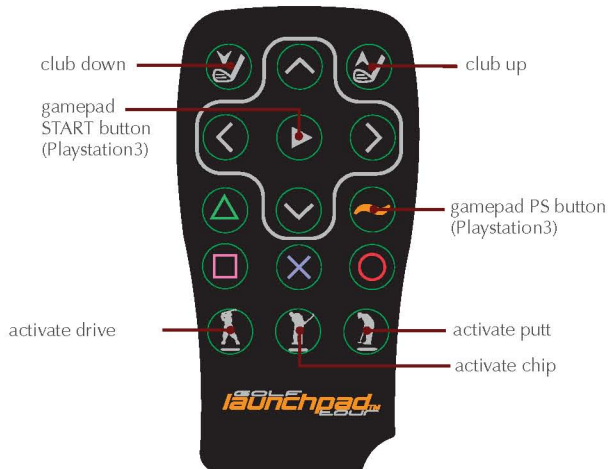
Golf Launchpad is ready for your shot. Swing directly over the sensors. Fore!



5.2 Shot types

- Full swing shots:** Activate Launchpad in **Drive Mode**. If you lack swing room for your longer clubs, swing a shorter club having selected the best club for the shot in the game.
- Short Game:** When playing chip and pitch shots under 50 yards, activate Launchpad in **Chip Mode**.
- Putting:** Set shot direction in the game, activate Launchpad in **Putt Mode** and putt straight over the sensor grid.

5.3 Remote Caddy™ functions



- When playing the game, every hole will begin with a flyby and commentators will offer useful shot-making suggestions. Line up your shots using the arrow buttons on the remote caddy, choose your club using the / buttons, and select your shot type using the button.
- The button can be used to take a mulligan immediately after the shot.
- Tip for PS3: To visualize your shot, press the button to view your shot's trajectory, press the button again to return to your shot view. If you change your club or shot type, press again to see where your shot is likely to land. While the landing position is shown, you can use the and buttons to adjust your aim.
- Tip for PC: To view the estimated landing location of your ball, press the button which represents the "E" key on your keyboard.

6. Tips



- **Win/Mac:** If your computer does not have a free USB port, you may add an additional USB port to your computer by connecting a powered USB hub. A few laptop models are unable to power Golf Launchpad. If this applies to your laptop, please connect a powered USB hub between your laptop and Golf Launchpad.
- **Win/Mac:** Please read the game software's manual on how to make it ready for a mouse swing. Golf Launchpad will only work with the True Swing Vertical mode that is available in Tiger Woods PGA TOUR 2003 and newer.



To avoid unintentional hooks and slices, swing straight over the sensors, and set the shot direction using the on-screen golfer.

7. Care and Maintenance

1. Using Golf Launchpad while any of its parts are incorrectly installed, loose or worn-out can cause premature failure of the unit. Worse, impropriety assembled or damaged parts can come off during play, causing injury or property damage. Replacement parts can be purchased in a convenient Reload Kit from www.electricspin.com/reload.
2. For optimum accuracy, keep your clubs clean and periodically vacuum debris off the turf. Do not insert anything in the sensor holes.
3. When the Tee is not used, tuck it under the net and away from the ball's movement to avoid part damage.
4. Golf Launchpad is a precision device, please treat it with care by avoiding excessive humidity, elevated temperatures and dusty environments. Replace worn out parts promptly. Always store Golf Launchpad on a flat, clean and dry surface to avoid damage.



8. Troubleshooting

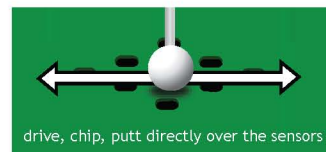


Status light OFF


- Check that the USB cable is plugged in and secure and the computer or Playstation3 is powered on.
- Verify that the USB port is operational.
- Some laptops are unable to power Golf Launchpad. In this situation please use a powered USB hub with Golf Launchpad.

Status light not changing, shots do not register

- Ensure that you are activating Golf Launchpad before taking a shot.
- Ensure that you swing directly over the sensor grid.
- Ensure that your clubs are clean. Some dark or unusually colored clubs may not work reliably with Golf Launchpad.

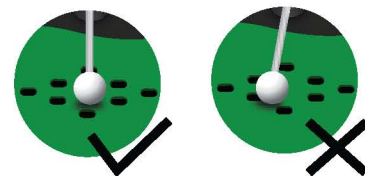


Status light changes but shot does not register

- Check: the game software is ready to play a shot.
- PC: Read the game software's manual and learn how to play the game first with a mouse.
- PC: Your PC must have a generic USB mouse driver installed. Without the game running, activating Golf Launchpad and taking a shot should cause the mouse cursor to move.
- Playstation3: Press the  button on the Remote Caddy™ and ensure that Golf Launchpad is controller #1.

Status light flashing red

- The ball or tee is placed too close to one of the sensors. Center the ball on the turf between the sensors. Remove the tee from the sensor grid when not in use.
- When activating with a club, ensure that your club is placed directly over only one activation sensor and is away from the others.
- Ensure that nothing is blocking or covering any of the sensors.



Remote Caddy™ does not register

- Ensure that the battery protector is removed.
- Aim the Remote Caddy™ directly at the Status Indicator.
- Playstation3: Press  and ensure that Golf Launchpad is controller #1.
- Ensure that the ball is centered between the sensors and the status indicator is a steady red.

Shot distance not accurate

- Use the correct Activation Mode that corresponds with the shot type selected in the game.
- For full-swing shots, activate using the Drive Mode.
- For short game shots, chips and pitches under 50 yds activate using the Chip Mode.
- For putts, activate using the Putt Mode.
- Ensure the anti-skid pads are installed, or, use the unit with an Electric~Spin stance mat (www.electricspin.com/reload).



electricspin.com/videotutorial



Please remove battery protector
before using Remote Caddy™.

Notes



Directive 89/336/CEE

- CISPR 22:2003 +A1:2004 / EN 55022:2003
- CISPR 24::1997 / EN 55024:1998 +A1:2001 & +A2:2003



FCC partie 15, sous partie B

- Périphérique informatique Classe B pour utilisation domestique en intérieur

NOTE: Cet équipement a été testé et est conforme aux limites d'un produit numérique de classe B, en application de la partie 15 des règles FCC. Ses limites sont destinées à fournir une protection raisonnable contre les interférences néfastes dans un environnement résidentiel. Cet équipement génère, utilise et rayonne de l'énergie de fréquence radio, et s'il n'est pas installé et utilisé conformément aux instructions, il peut causer des interférences dommageables aux communications radio. Cependant, il n'y a aucune garantie que des interférences n'apparaissent pas dans une installation particulière. Si cet équipement produit des interférences radio perturbant la réception de la radio ou de la télévision, ce qui peut être déterminé en éteignant et en allumant l'équipement, l'utilisateur est invité à essayer de corriger le problème en utilisant une des méthodes suivantes :

- Réorienter ou déplacer l'antenne de réception
- Augmenter la distance entre l'équipement et le récepteur radio ou de télévision
- Connecter l'équipement à une source d'alimentation différente de celle du récepteur radio ou TV
- Consulter un technicien spécialité en Radio et TV pour plus d'aide



Electric Spin Inc a utilisé des matériaux recyclés et recyclables et a pris des mesures dans le processus de fabrication du Golf Launchpad pour réduire l'impact sur l'environnement. Des efforts ont été faits pour minimiser l'impact sur l'environnement de matériaux non recyclable, solvant organique volatiles et d'autres procédés polluants. Veuillez à recycler les emballages.

NOTES CONCERNANT LES MARQUE COMMERCIALE ET LES BREVETS

Electric Spin, Le logo Electric Spin, Golf Launchpad, Golf Launchpad Tour, Golf Launchpad Flite, le logo Golf Launchpad logo, la silhouette du golfeur et "launch your game" sont des marques commerciales d'Electric Spin Corporation. Toutes les autres marques sont la propriété de leurs propriétaires respectifs. Couvert par un ou plusieurs brevets : US Patent No. D555,221 S, d'autres brevet sont en cours. Copyright © Electric~Spin

DECLARATION DE CONFORMITE

FABRICANT: Electric-Spin Corp.
ADDRESS: 171B Marycroft Ave. Suite 202
Woodbridge, Ontario
Canada, L4L 5Y3

Nom du produit: Golf Launchpad Tour / Flite
Type de matériel: Equipement technologique
Modèle n°: LPTVPX / LPFVPX
Année de fabrication: 2009

This document is available online at www.electricspin.com/support.html
Copyright Electric~Spin Corporation. All rights reserved.

Ce Document est disponible via Internet au www.electricspin.com/support.html
Copyright Electric-Spin Corporation. Tous droits réservés.

Este documento está disponible en internet en www.electricspin.com/support.html
Derechos de autor de Electric Spin Corporation. Todos los derechos reservados.

Dieses Dokument finden Sie auf unserer Homepage unter www.electricspin.com/support.html
Copyright Electric~Spin Corporation. Alle Rechte vorbehalten.

Questo documento è disponibile online sul sito www.electricspin.com/support.html.
Copyright Electric~Spin Corporation. Tutti i diritti riservati."

Warranty / Garantie / Garantía / Garantie / Garanzia : www.electricspin.com/warranty

UMT1-200906-EN-FR-ES-DE-IT

